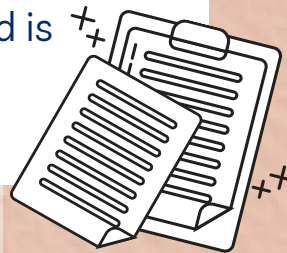


ADOS

WHAT IS ADOS?

ADOS stands for **Autism Diagnostic Observation Schedule**

- ADOS is a **standardized, semi-structured, observational measure** for Autism Spectrum Disorder (ASD) across age, developmental levels and language skills.
- ADOS involves **making direct observations under controlled and replicable conditions**.
- ADOS is published by Western Psychological Service (WPS) and is **available in 15 different languages**.



GOLD STANDARD !

- ADOS-2, a revision of the autism diagnostic observation schedule (ADOS), often has been referred to as the **"gold standard" measure** of observational assessment for autism spectrum disorder (ASD).
- ADOS-2 is also used in both **clinical and research settings** around the world

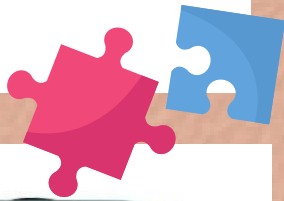


ADOS-2

HAND-SCORED KIT

The ADOS-2 Hand-Scored Kit includes :

- ADOS-2 Manual
- 50 Protocol Booklets
- Test Materials (100+ items)
- **Activities** involving the stimulus materials include Construction Task, Make-Believe Play, Joint Interactive Play, Demonstration Task, Description of a Picture, Telling a Story From a Book, Emotions, Friends, Relationships, Loneliness etc.



WHO CAN ADMINISTER ADOS

- **Our psychologists at SPOT!**
- Or **clinicians** who have prior education, training and experience in conducting ASD assessments.
- Clinical and school psychologists, psychiatrists, occupational therapists, and speech pathologists also use ADOS-2 in their daily work



THE 5 MODULES

- Toddler Module:** for children between 12 and 30 months who do not consistently use phrase speech
- Module 1:** for children 31 months and older who do not have consistent verbal communication skills.
- Module 2:** for children who have minimal verbal communication skills; targets young children at age-appropriate skill levels. Most scenarios require moving around the room and interacting with objects
- Module 3:** for children who are verbally fluent and capable of playing with age-appropriate toys
- Module 4:** for children who are verbally fluent but beyond the age of playing with toys (older adolescents and adults).

